

CALCANA

Low clearance
Residential
Garage Heaters

Input Options

- Single
- Hi / Lo
- Modulating

Infrared heating systems



Modulating remote
control panel (optional)
(patent pending)

Clean burning flow through design



Side wall venting



- Residential garages
- Industrial buildings
- Work shops

Fuel savings of 40%!

SPECIFICATIONS

General Specifications

Rating (Input: Natural and L.P. Gas) 0-4500ft elevation.

| Model | Input | Length |
|------------|--------------|--------|
| Cal-40A-10 | 40,000BTU/hr | 10' |
| Cal-50A-15 | 50,000BTU/hr | 15' |
| Cal-75A-20 | 75,000BTU/hr | 20' |

Gas Pressure at Manifold:

| | |
|---------------------|-------------|
| Natural Gas | 3.5" W.C. |
| L.P. Gas | 10.5" W.C. |
| Gas Connection Size | 0.5" N.P.T. |

Gas Inlet Pressure:

| Gas | Minimum | Maximum |
|---------|------------|------------|
| Natural | 4.5" W.C. | 14.0" W.C. |
| L.P. | 11.5" W.C. | 14.0" W.C. |

Electrical Rating:

DSI Ignition
120v, 60 hz, 1 Amps
24 volt low voltage thermostat

Standard Equipment:

Units come complete with industry standard gas, electrical and venting connections, balanced air rotor, thermal overload protected motor, visual burner inspection sight glass, combustion and air proving safety switch, 3-try spark ignition control, 100% safety shut off, low voltage thermostat connection, 4" heat treated aluminized combustion tube, aluminum reflector, 4" mild steel radiant heat exchanger, tube couplers, joint/hanger pieces, heat economizer baffle, thermostat, hanging chain, and flexible gas connector

Shipping Weight & Dimensions

| Preassembled Units | | | Disassembled Units | | |
|--------------------|--------|-----------------|---------------------|--------|----------------|
| | Wt Lbs | Dimensions | | Wt Lbs | Dimensions |
| Cal-40-10' | 85 | 20"Wx11"Hx125"L | Burner Head* | 26 | 18"Wx11"Hx24"L |
| Cal-50-15' | 125 | 22"Wx11"Hx132"L | 10' Reflector Kit | 58 | 22"Wx11"Hx65"L |
| Cal-75-20' | 135 | 22"Wx11"Hx132"L | 15' Reflector Kit | 77 | 22"Wx11"Hx65"L |
| | | | 20' Reflector kit** | 77 | 22"Wx11"Hx65"L |
| | | | | 18 | 9"Wx4"Hx60"L |

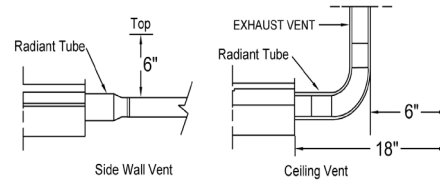
Optional Equipment:

- Hi/Lo Input
- Modulating Input
- 4" x 90 Elbow Kit
- 4" x 180 U-bend Kit
- Sidewall vent kit
- Outdoor combustion kit
- 4" Vertical Vent Adaptor
- 3" x 90 Exhaust elbows

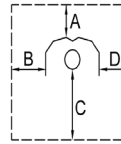


CLEARANCE TO COMBUSTIBLES
(REFER TO INSTALLATION INSTRUCTIONS FOR COMPLETE DETAILS)

END CLEARANCES
(EXHAUST END)

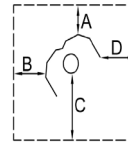


HORIZONTAL



Standard Reflector (inches)

TILT



25° to 45° Tilt

Installation Type 1

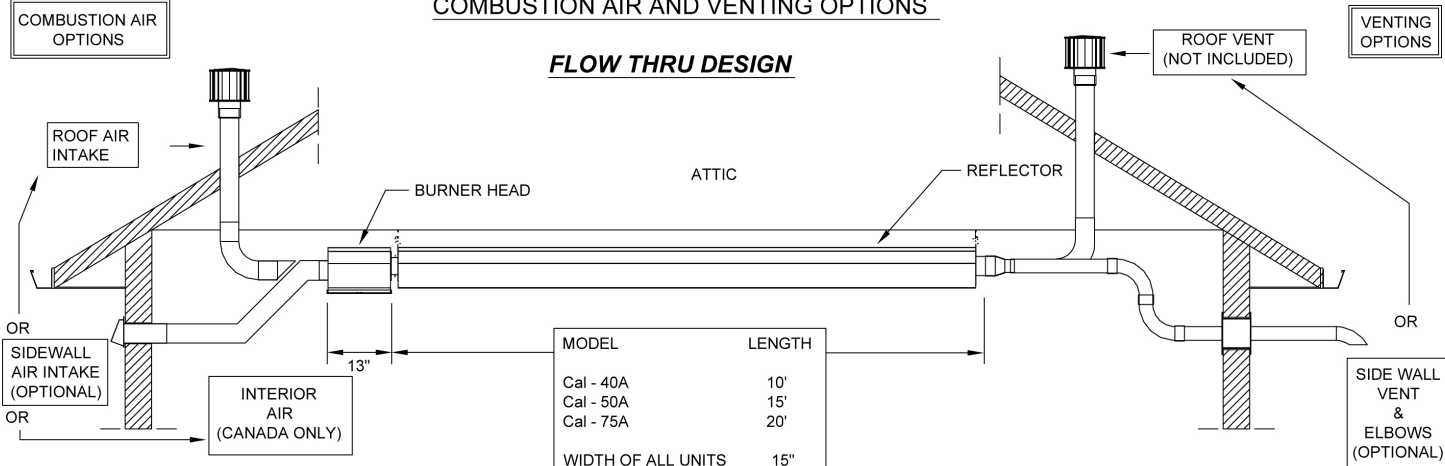
| Input | A | B | C | D |
|-------|---|----|----|----|
| 40 | 4 | 12 | 36 | 12 |
| 50 | 4 | 12 | 43 | 12 |
| 75 | 4 | 15 | 48 | 15 |

Installation Type 2

| Input | A | B | C | D |
|-------|---|---|----|----|
| 40 | 4 | 4 | 36 | 28 |
| 50 | 4 | 4 | 40 | 28 |
| 75 | 4 | 4 | 45 | 31 |

COMBUSTION AIR AND VENTING OPTIONS

FLOW THRU DESIGN



| MODEL | LENGTH |
|--------------------|--------|
| Cal - 40A | 10' |
| Cal - 50A | 15' |
| Cal - 75A | 20' |
| WIDTH OF ALL UNITS | 15" |

© All rights reserved. No part of this work herein may be reproduced or copied in any form or by any means - graphic, electronic, or mechanical, including photocopying, recording, taping or information storage and retrieval systems - without written consent from CALCANA INDUSTRIES LTD. The information herein is current at the time of printing, but may be subject to change at any time without notice. 2011 - CALCANA INDUSTRIES LTD.

PRINTED IN THE USA

| | |
|--------------------------------------------------------------------------------------------------------------------------------------------------------|-------------------------------------------------------------------------------------------------------------------------------------------|
| <p>CANADA Calcana Industries Ltd. 5507 - 6th St. S.E. Calgary, Alberta, Canada, T2H 1L6 Tel: 403-777-0808 Fax: 403-777-0807</p> | <p>USA Calcana USA Ltd. 30245 Suite A, County Rd 49 Loxley, Alabama, 36551 Tel: 251-964-4400 Fax: 251-964-4404</p> |
|--------------------------------------------------------------------------------------------------------------------------------------------------------|-------------------------------------------------------------------------------------------------------------------------------------------|

Distributed by:

1-800-778-6729
Website: www.calcana.com
email: sales@calcana.com